



## Venice Water Booster Pump Station

Construction Update October 2025

### Work scheduled for October 2025:

#### Onsite:

- Installation of access control and security systems
- Instrumentation and controls completion and SCADA integration
- Audio and video system installation completion
- Landscaping installation completion
- Completion of building interior finish work and cleaning
- Substantial completion walkthrough

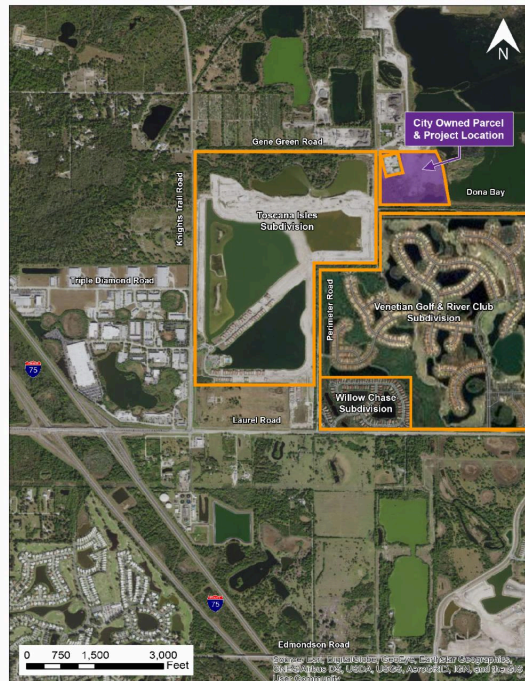
#### Offsite installations:

- Substantial completion walkthrough

Large equipment and machinery will be within the road right-of-way. Please drive slowly, use caution and watch out for pedestrians and workers. Motorists are to follow posted traffic control signs. This schedule may be subject to change. Estimated project completion is fall 2025.



### NEW WATER BOOSTER PUMP STATION - PROJECT LOCATION



The City of Venice currently owns and operates one Reverse Osmosis Water Treatment Plant, which serves approximately 26,000 residents from its location near the Intracoastal Waterway. The City is making improvements to the potable water system by constructing a new Water Booster Pump Station (BPS). The BPS will be located on the northern portion of an approximately 40-acre City-owned parcel at the eastern end of Gene Green Road adjacent to Sarasota County's Dona Bay Surface Water Storage Facility.

For more information, visit the project website at [www.venicewaterboosterstation.com](http://www.venicewaterboosterstation.com) or contact the City's Public Information Consultant for this project at:

**CMA Outreach, Inc.**  
Toll free 877-496-1076 or email [info@venicewaterboosterstation.com](mailto:info@venicewaterboosterstation.com)

