



## Venice Water Booster Pump Station

Construction Update May 2025

### Work scheduled for May 2025:

#### Onsite:

- Complete insulation of stucco system
- Complete insulation exterior doors
- Complete metal roofing, soffits, and gutters
- Pressure test entire BPS piping system
- Flushing and chlorination of lines and ground storage tank
- Logo on ground storage tank
- Install booster pumps
- Preliminary start-up of booster pumps
- Complete chemical system installation
- Pave BPS roadway
- Begin fencing installation
- Begin HVAC startup
- Start-up of electrical switchgear
- Preparation for start-up of generator

#### Offsite installations:

- Begin pre-construction activities for Interconnect

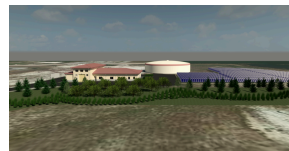
Large equipment and machinery will be within the road right-of-way. Please drive slowly, use caution and watch out for pedestrians and workers. Motorists are to follow posted traffic control signs. This schedule may be subject to change. Estimated project completion is summer 2025.



The City of Venice currently owns and operates one Reverse Osmosis Water Treatment Plant, which serves approximately 26,000 residents from its location near the Intracoastal Waterway. The City is making improvements to the potable water system by constructing a new Water Booster Pump Station (BPS). The BPS will be located on the northern portion of an approximately 40-acre City-owned parcel at the eastern end of Gene Green Road adjacent to Sarasota County's Dona Bay Surface Water Storage Facility.

For more information, visit the project website at [www.venicewaterboosterstation.com](http://www.venicewaterboosterstation.com) or contact the City's Public Information Consultant for this project at:

Cella Molnar & Associates, Inc.  
Toll free 877-496-1076 or email [info@venicewaterboosterstation.com](mailto:info@venicewaterboosterstation.com)



City of Venice | 401 West Venice Avenue | Venice, FL 34285 US

[Unsubscribe](#) | [Update Profile](#) | [Constant Contact Data Notice](#)