



Venice Water Booster Pump Station

Construction Update August 2025

Work scheduled for August 2025:

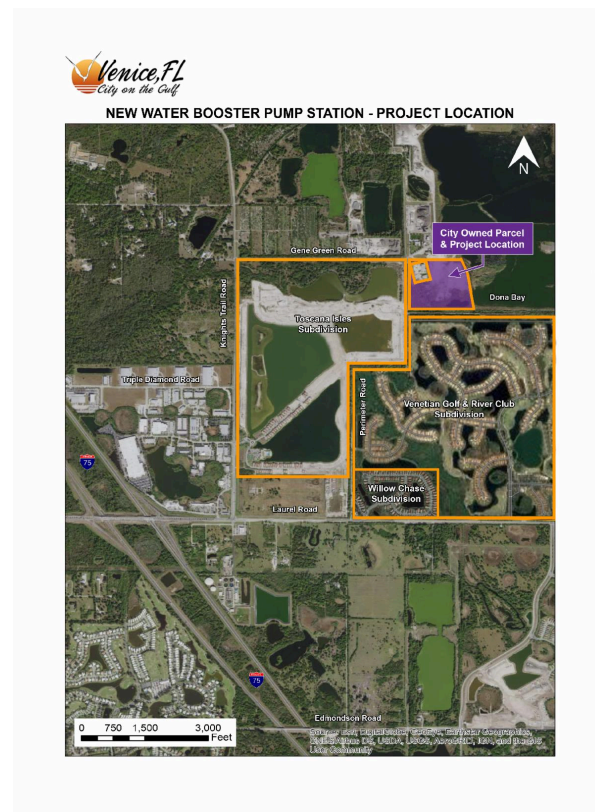
Onsite:

- Complete devices around buildings
- Complete fire alarm systems
- Complete flooring
- Begin chain link fence installation
- System & leak testing
- Complete grading
- Complete plumbing
- Preliminary start-up of booster pumps
- Complete chemical system installation
- Pave BPS roadway
- Begin HVAC startup
- Start-up of electrical switchgear
- Preparation for start-up of generator

Offsite installations:

- Begin pre-construction activities for Interconnect

Large equipment and machinery will be within the road right-of-way. Please drive slowly, use caution and watch out for pedestrians and workers. Motorists are to follow posted traffic control signs. This schedule may be subject to change. Estimated project completion is late summer 2025.



The City of Venice currently owns and operates one Reverse Osmosis Water Treatment Plant, which serves approximately 26,000 residents from its location near the Intracoastal Waterway. The City is making improvements to the potable water system by constructing a new Water Booster Pump Station (BPS). The BPS will be located on the northern portion of an approximately 40-acre City-owned parcel at the eastern end of Gene Green Road adjacent to Sarasota County's Dona Bay Surface Water Storage Facility.

For more information, visit the project website at www.venicewaterboosterstation.com or contact the City's Public Information Consultant for this project at:

CMA Outreach, Inc.
Toll free 877-496-1076 or email info@venicewaterboosterstation.com

