



WATER BOOSTER PUMP STATION

Public Workshop

*For rezoning, special exception
and site and development plan*

November 16, 2020 | 5:30 p.m.

www.venicewaterboosterstation.com

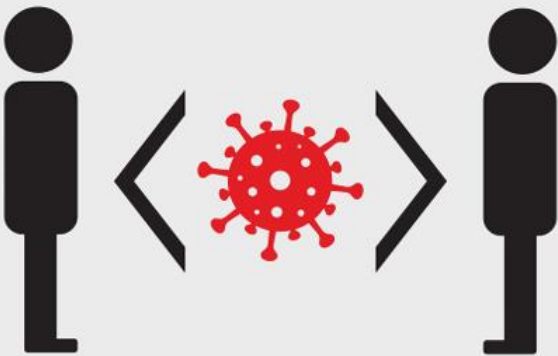


Agenda



1. ZOOM Meeting Information
2. Presentation
3. Questions & Comments

About the Virtual Meeting Format

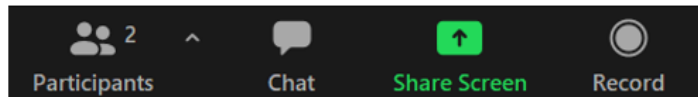


- COVID-19 Pandemic
- ZOOM online meeting platform
- No cost to the public to log-in or dial-in to the meeting

Question & Answer Segment

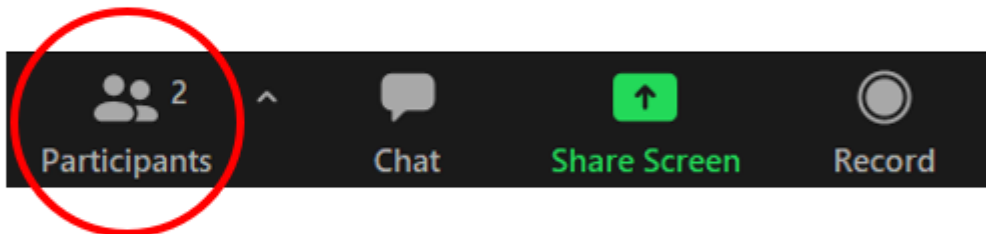


- Questions will be addressed during the Q&A segment at the conclusion of the presentation.
- Please be understanding of the limitations of this virtual format, and be respectful of time to allow everyone to voice their opinion.

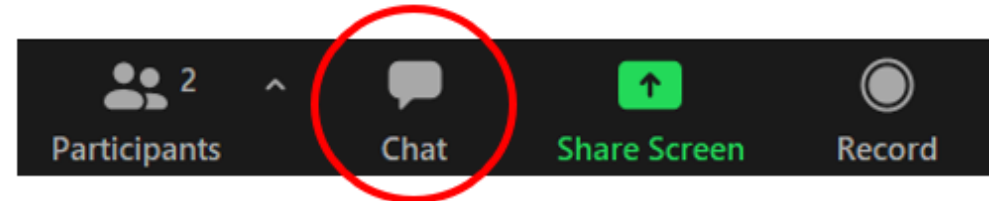


Question & Answer Segment

- If you wish to ask questions out loud, click on the “Participants” icon at the bottom of your screen to unmute your audio.
- If you are calling in via telephone, please press *6 to unmute your audio.



- If you **DO NOT** wish to ask your questions verbally, click on the “Chat” icon at the bottom of your screen to type questions and comments.





WATER BOOSTER PUMP STATION

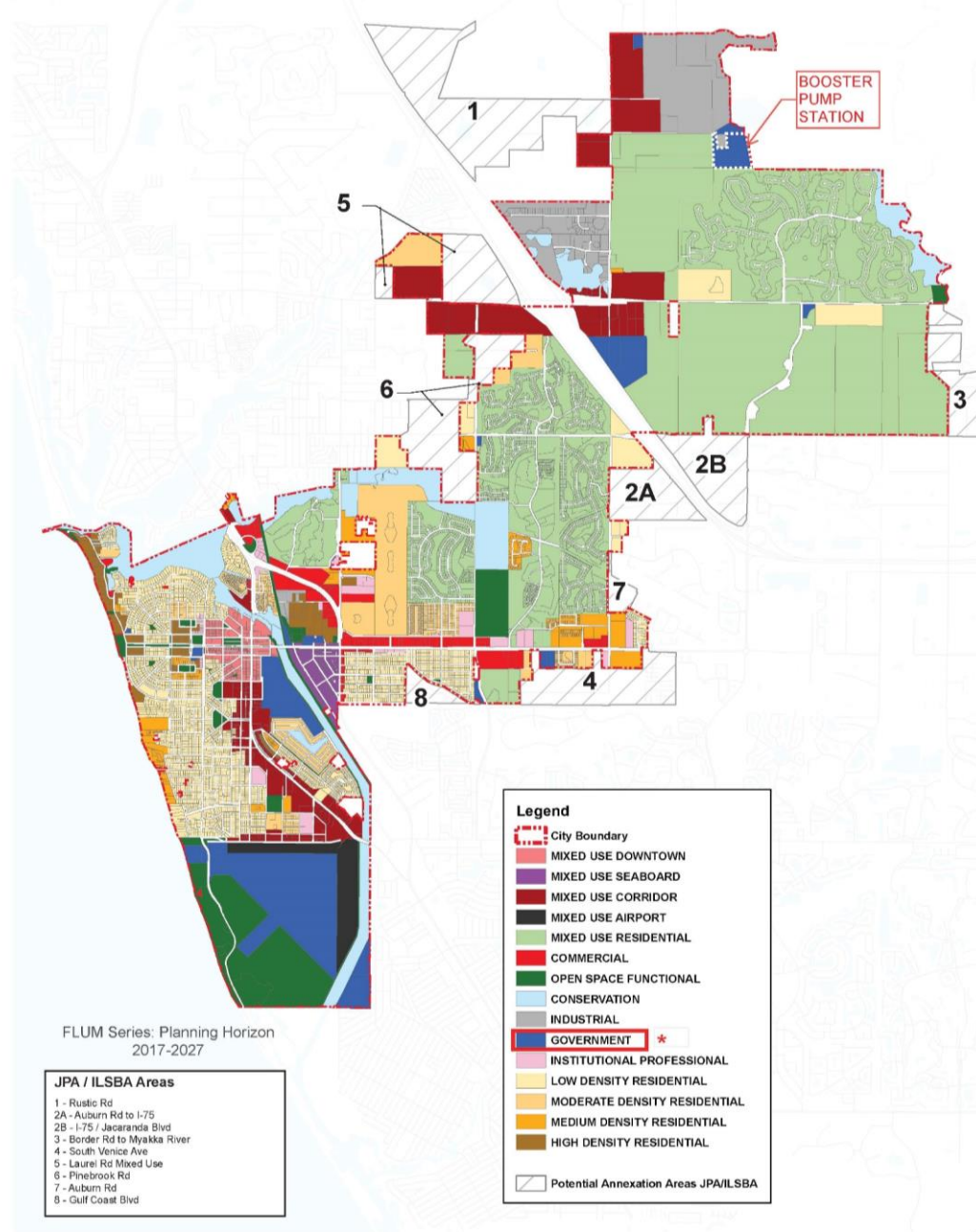
Public Workshop

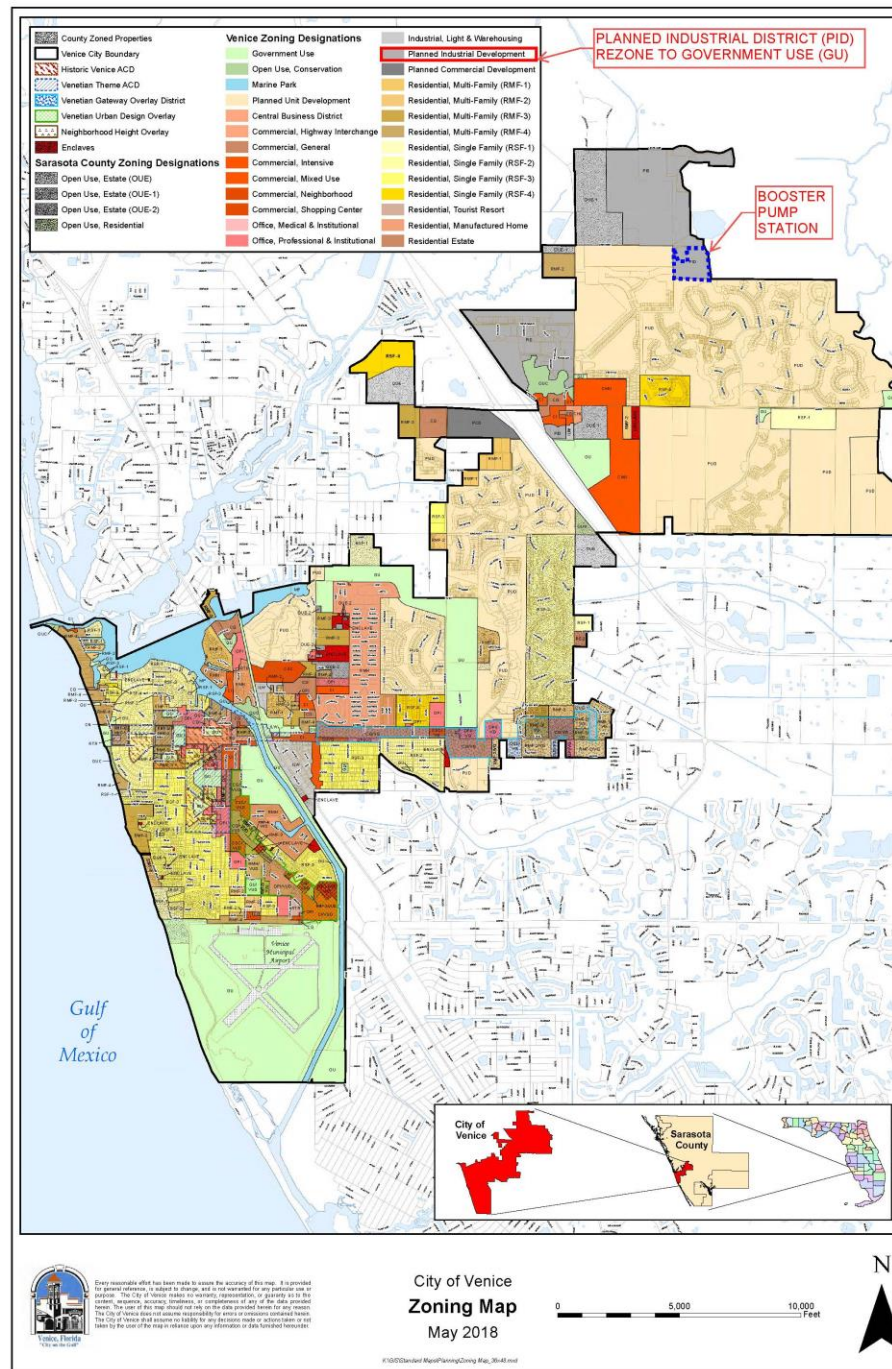
*For rezoning, special exception
and site and development plan*

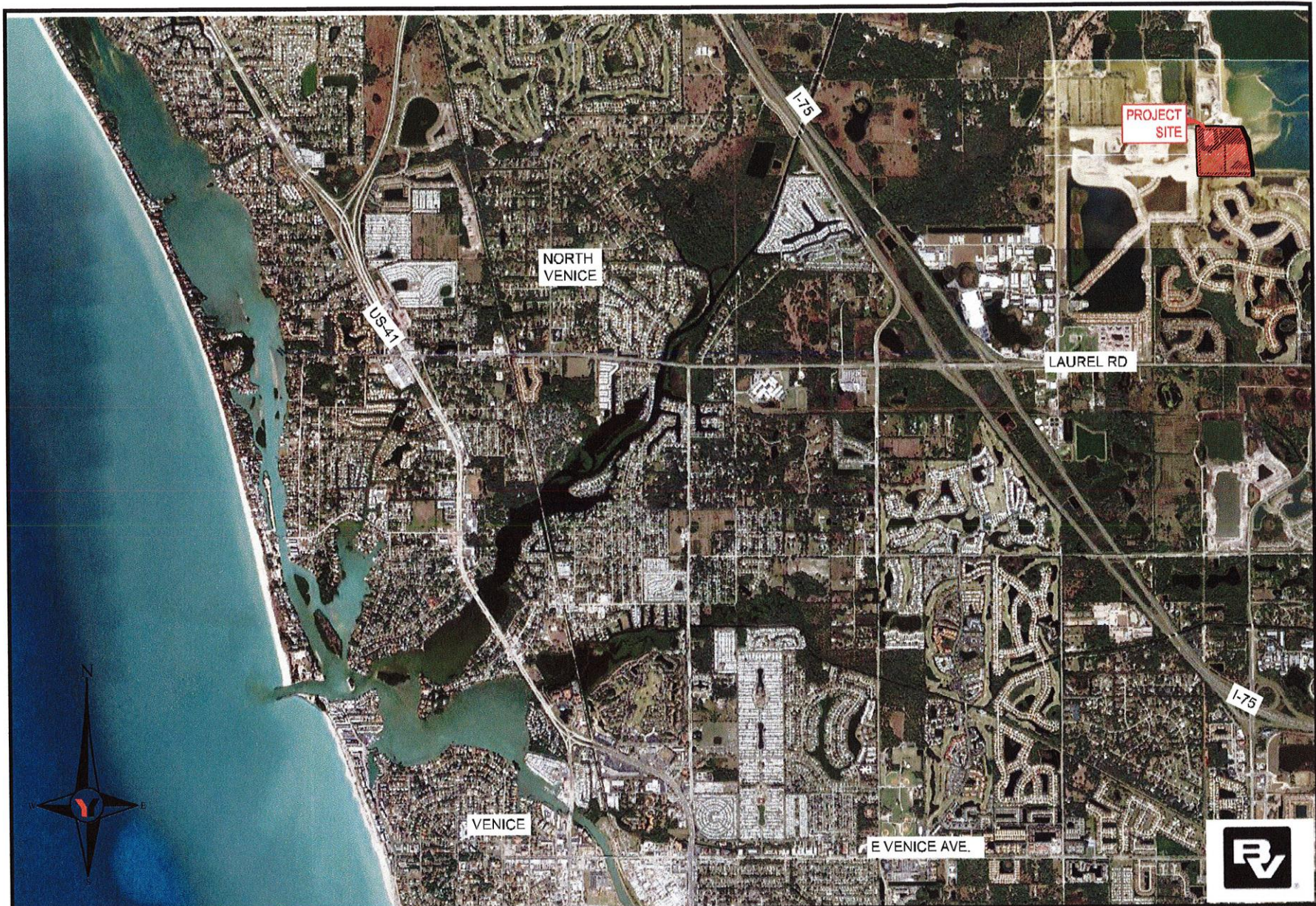
November 16, 2020 | 5:30 p.m.


www.venicewaterboosterstation.com









	INITIALS	DATE	 George F. Young, Inc. <small>10540 PORTAL CROSSING, SUITE 105 LAKEWOOD RANCH, FLORIDA 34211-4813 PHONE (941) 747-2981 FAX (941) 747-7234 WWW.GEORGEFYOUNG.COM ENGINEERING CERTIFICATE OF AUTHORIZATION NUMBER 21 CIVIL & TRANSPORTATION ENGINEERING / ECOLOGY / GIS / LANDSCAPE ARCHITECTURE PLANNING / SURVEYING / SUBSURFACE UTILITY ENGINEERING</small>	CITY OF VENICE BOOSTER PUMP STATION AERIAL LOCATION MAP SECTION 22-23 TOWNSHIP 38 S., RANGE 19 E. PREPARED FOR: BLACK & VEATCH CORPORATION 4415 METRO PARKWAY, SUITE 200 FT. MYERS, FL 33916	JOB NO. 19003300LC
DESIGN					SHEET NO. EX2
DRAWN	CINTRON	02/27/20			
CHECKED					
QUALITY CHK					
SCALE					

FILE: I:\PROJECT\ENG\2019\19003300LC\Draw\Exhibits\19003300LC-ASP.dwg
 LOGIN: Cintron, Juan Carlos
 PLOTTED: 10/22/2020 3:53 PM





OFFSITE UTILITIES FOR THE NEW VENICE BOOSTER PUMP STATION

Legend

- Venice WM
- Proposed Offsite
16" Potable
Water Pipelines
- Proposed Fiber
Optic Extension
to Venice WRF
- - - Sarasota County
42" WM
- Emergency
Potable Water
Interconnect

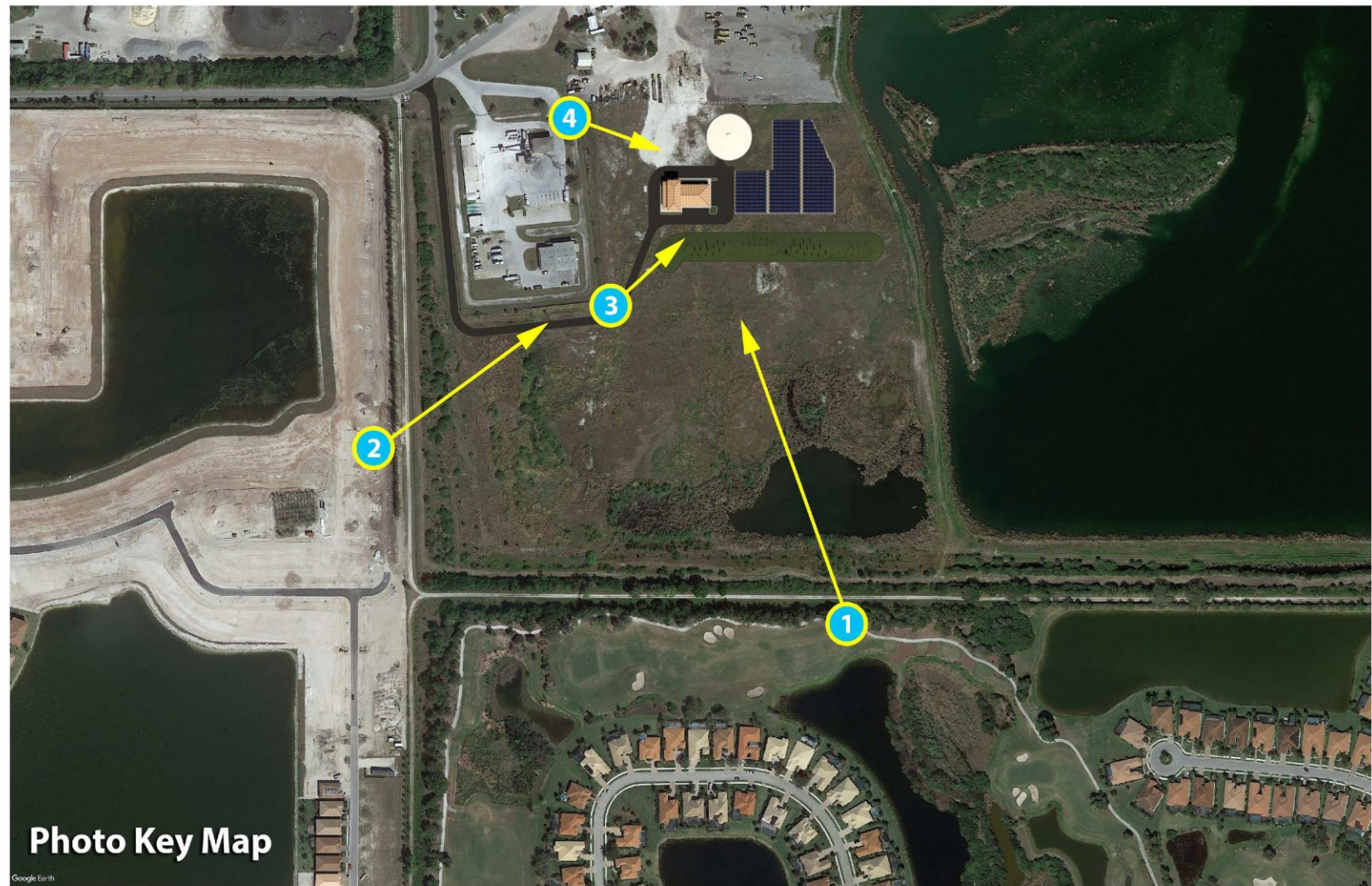


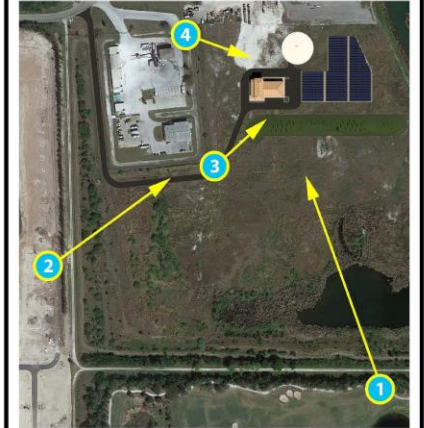
Photo Key Map

VENICE NEW WATER BOOSTER PUMP STATION



1 VGR Golf Course View

VENICE NEW WATER BOOSTER PUMP STATION





2 Toscana Isles Sub-Division View

**VENICE NEW
WATER BOOSTER
PUMP STATION**





3 BPS Facility

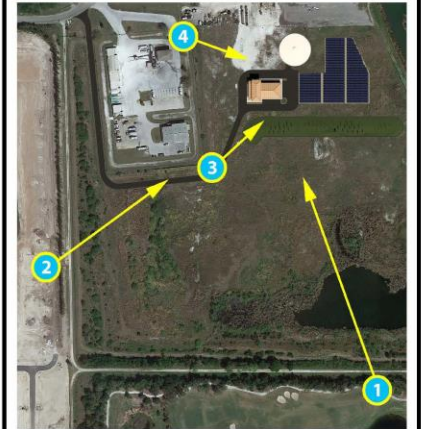
**VENICE NEW
WATER BOOSTER
PUMP STATION**





4 BPS Facility

VENICE NEW WATER BOOSTER PUMP STATION





Question & Answer Segment

For additional questions or comments:

After meeting

www.venicewaterboosterstation.com



Info@venicewaterboosterstation.com

